

Somerset Yangtze River Chongqing

2017 Agreement

Thank you very much for your interest in our residence.

Located at Changjiang Binjiang Road, Yuzhong district, Somerset Yangtze River Chongqing is ideally positioned in the heart of Chongqing's bustling financial center. A 35-minute drive from Chongqing Jiangbei International Airport will lead you to our residence. Our centrally located property allows you to easily shuttle across the city with Lin Jiang Men subway station at a stone throw away from the residence, while JieFangBei Business Centre is a short 5-minute drive away.

Our 172-unit serviced residence is located in front of Baixiang Street, offering spanning views of the Yangtze River and Nanbin's picturesque cityscape. Facilities include an outdoor swimming pool, reading lounge, children's playroom, a co-working station and an exclusive residents' lounge providing coffee throughout the day.

Attached are our some of our residence's images for your reference. Alternatively, you may like to visit www.the-ascott.com for further information.



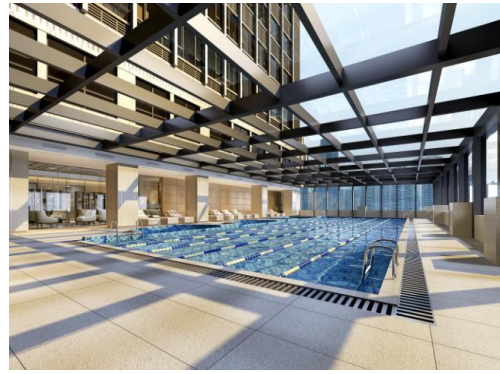
Cozy Living Room



Spacious Bedroom



Elegant Lobby



Sunny Swimming Pool

(We have the corporative price the guest which comes from CCIC)

Room Type	Gross Floor Area (sqm)	Bed Configuration	Daily Stayed Rates (CNY)
Studio Executive	38	Hollywood Twin (1m*2m*2)	458
Studio Premier	53	1 Super King Size Bed (2m*2m)	488
One Bedroom Executive	75	1 Super King Size Bed (2m*2m)	587
One Bedroom Premier	89	1 Super King Size Bed (2m*2m)	637
Two Bedroom Executive	97	1 Super King Size Bed + 2 Single Beds (2m*2m + 2m*1.2m*2)	737
Two Bedroom Premier	128	1 Super King Size Bed +1 King Size Bed (2m*2m + 2m*1.8m)	937
Three Bedroom Premier	161	1 Super King Size Bed +1 King Size Bed + Hollywood Twin (2m*2m + 2m*1.8m + 1m*2m*2)	1137

The daily rate includes:

- Daily breakfast based on the selected room category:
Studio and 1-bedroom: 1 daily breakfast

- 2-bedroom: 2 daily breakfasts
- 3-bedroom: 3 daily breakfasts
- Complimentary in-room WIFI & broadband
- Complimentary usage of all clubhouse facilities (gym, steam room, swimming pool)
- Car parking charges

Daily Rate excludes:

- Local call, IDD & DDD charges (15% surcharge)
- Laundry and dry cleaning services

Room Type	Gross Floor Area (sqm)	Bed Configuration	Monthly Corporate Rate (CNY)
Studio Executive	38	Hollywood Twin (1m*2m*2)	10000
Studio Premier	53	1 Super King Size Bed (2m*2m)	10500
One Bedroom Executive	75	1 Super King Size Bed (2m*2m)	12000
One Bedroom Premier	89	1 Super King Size Bed (2m*2m)	13000
Two Bedroom Executive	97	1 Super King Size Bed + 2 Single Beds (2m*2m + 2m*1.2m*2)	15000
Two Bedroom Premier	128	1 Super King Size Bed +1 King Size Bed (2m*2m + 2m*1.8m)	20000
Three Bedroom Premier	161	1 Super King Size Bed +1 King Size Bed + Hollywood Twin (2m*2m + 2m*1.8m + 1m*2m*2)	25000

The monthly rates include:

- Daily breakfast based on the selected room category:
Studio and 1-bedroom: 1 daily breakfast
2-bedroom: 2 daily breakfasts
3-bedroom: 3 daily breakfasts
- Complimentary routine cleaning services [2] times weekly (except Sunday & public holidays)
- Utility allowance of RMB 300 for Studio, RMB500 for 1-bedroom, RMB800 for

2-bedroom, RMB1000 for 3-bedroom. The utility allowance cannot be accumulated and is non-exchangeable and non-redeemable.

Exceeded utilities will be charged at the following rates: o Cold water: RMB4.55+3% VAT / Ton o Hot water: RMB20+3% VAT / Ton o Electricity: RMB0.85+13% VAT / Kwh

- Complimentary in-room WIFI & broadband
- Complimentary usage of all clubhouse facilities (gym, steam room, swimming pool)

Monthly Rate excludes:

- Car parking charges 1200yuan/Month Long stay guest 50%off
- Local call, IDD & DDD charges (15% surcharge)
- Laundry and dry cleaning services

Kindly note that the following terms and conditions are applicable:

- Security deposit and incidental deposit requirements:
- Advance payment of the room rental and incidental deposit of RMB 500 is required for leases of 30 days to 79 days prior to guest's arrival
- Advance payment of the room rental and security deposit equivalent to one month's rental are required for leases of 90 days to 179 days prior to guest's arrival
- Advance payment of the room rental and security deposit equivalent to two month's rental are required for leases of 180 days and above, prior to guest's arrival

Cancellation policy:

- Cancellation of reservation must be received at least 14 days prior to arrival date for stays of 30 nights and above.
- Failure to do so within the stipulated timeframe will incur the following penalty: 3 nights' rental for 30 nights and above stay.

We look forward to welcoming you as our resident here at Somerset Yangtze River Chongqing.

Contact person:

Rachel Li

Telephone number :15730266362

E-mail:rachel.li@the-ascott.com

