

Thank you very much for your interest in our residence.

Located at Changjiang Binjiang Road, Yuzhong district, Somerset Yangtze River Chongqing is ideally positioned in the heart of Chongqing's bustling financial center. A 35-minute drive from Chongqing Jiangbei International Airport will lead you to our residence. Our centrally located property allows you to easily shuttle across the city with Lin Jiang Men subway station at a stone throw away from the residence, while JieFangBei Business Centre is a short 5-minute drive away.

Our 172-unit serviced residence is located in front of Baixiang Street, offering spanning views of the Yangtze River and Nanbin's picturesque cityscape. Facilities include an outdoor swimming pool, reading lounge, children's playroom, a co-working station and an exclusive residents' lounge providing coffee throughout the day.

Attached are our some of our residence's images for your reference. Alternatively, you may like to visit www.the-ascott.com for further information.



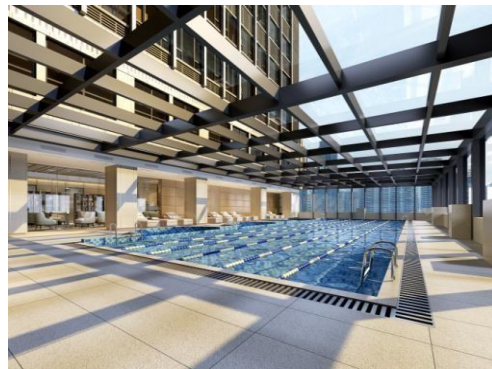
Cozy Living Room



Spacious Bedroom



Elegant Lobby



Sunny Swimming Pool

According to your request, the quotation below is for your kind consideration.

(We have the corporative price the guest which comes from CCIC)

Room Type	Gross Floor Area (sqm)	Bed Configuration	Monthly Preferred Rates (CNY)	Corporative Price
One Bedroom Executive	75	1 Super King Size Bed (2m*2m)	12500	12,000
One Bedroom Premier	89	1 Super King Size Bed (2m*2m)	13500	13,000
Two Bedroom Executive	97	1 Super King Size Bed + 2 Single Beds (2m*2m + 2m*1.2m*2)	15500	15,000
Two Bedroom Premier	128	1 Super King Size Bed +1 King Size Bed (2m*2m + 2m*1.8m)	21000	20,000

Contact : Rachel Li

Telephone number :15730266362

E-mail:rachel.li@the-ascott.com

The monthly rates include:

- Daily breakfast based on the selected room category:
 - Studio and 1-bedroom: 1 daily breakfast
 - 2-bedroom: 2 daily breakfasts
 - 3-bedroom: 3 daily breakfasts
- Complimentary routine cleaning services [2] times weekly (except Sunday & public holidays) ▪ Utility allowance of RMB 300 for Studio, RMB500 for 1-bedroom, RMB800 for 2-bedroom, RMB1000 for 3-bedroom. The utility allowance cannot be accumulated and is non-exchangeable and non-redeemable. Exceeded utilities will be charged at the following rates:
 - Cold water: RMB4.55+3% VAT / Ton
 - Hot water: RMB20+3% VAT / Ton
 - Electricity: RMB0.85+13% VAT / Kwh
- Complimentary in-room WIFI & broadband
- Complimentary usage of all clubhouse facilities (gym, steam room, swimming pool)

Monthly Rate excludes:

- Car parking charges 1200yuan/Month Long stay guest 50%off
- Local call, IDD & DDD charges (15% surcharge)
- Laundry and dry cleaning services

Kindly note that the following terms and conditions are applicable:

- Security deposit and incidental deposit requirements:
 - ◆ Advance payment of the room rental and incidental deposit of RMB 500 is required for leases of 30 days to 79 days prior to guest's arrival
 - ◆ Advance payment of the room rental and security deposit equivalent to one month's rental are required for leases of 90 days to 179 days prior to guest's arrival
 - ◆ Advance payment of the room rental and security deposit equivalent to two month's rental are required for leases of 180 days and above, prior to guest's arrival ● Cancellation policy:
 - ◆ Cancellation of reservation must be received at least 14 days prior to arrival date for stays of 30 nights and above.
 - ◆ Failure to do so within the stipulated timeframe will incur the following penalty: 3 nights' rental for 30 nights and above stay.

In order to ensure the availability of your preferred room, the confirmation at your soonest convenience is highly appreciated.

Please do not hesitate to contact me if you should require any further information or assistance.

We look forward to welcoming you as our resident here at Somerset Yangtze River Chongqing.

Best Regards,

Rachel Li